

051311.01:000000000000

COSPLAY GUIDE

ROOKIE

343
INDUSTRIES™

HALO

ROOKIE

COSPLAY GUIDE

One of the coolest elements of video games is the unique way they can make you feel like you're truly immersed inside your favorite universe or franchise. From Spartans and Spectres to Gears and Grey Wardens, it can be exhilarating to step inside the experience to truly become your favorite character.

For some fans though, their passion for truly becoming part of the universe is on an entirely different level.

Halo has been incredibly blessed to have such a massive and engaged cosplay community, with dedicated members all over the world pouring their heart, soul, and skills into bringing the universe to life. We're always impressed by the lengths that cosplay creatives will go to in order to lend a helping hand to others. Whether it's assisting someone on their first build, bringing extra foam and Velcro to share at an event, or making an appearance at a moment's notice to support a good cause, cosplayers are very often at the forefront of what it means to truly be a community.

Guides like these are one way we would like to continue our own involvement in these endeavors—compiled by dedicated 343 team members from across the studio eager to help provide some additional assistance to fans through official assets, reference shots, material guides, turnarounds, contextual information, stats, details, and more. We hope you enjoy this particular contribution to your own creative process, and we can't wait to see what you make next.

- 343 Industries



343
INDUSTRIES

ROOKIE

LEGAL

© 2020 Microsoft. All rights reserved. For more information, please visit our Terms of Use, Privacy Statement, and the Microsoft Trademark List.

TERMS OF USE

<https://www.microsoft.com/en-us/legal/intellectualproperty/copyright/default>

PRIVACY STATEMENT

<https://privacy.microsoft.com/en-us/privacystatement>

MICROSOFT TRADEMARK LIST

<https://www.microsoft.com/en-us/legal/intellectualproperty/trademarks/en-us.aspx>

The purpose of this guide is to inform cosplay fans, and not intended for use of recreating content with the intent to sell.



343
INDUSTRIES

ROOKIE

TABLE OF CONTENTS

DOCUMENTATION

LEGAL..... P. 1

CHARACTER INFORMATION

BIO..... P. 3

COLORS AND MATERIALS

MATERIAL/COLOR GUIDE..... P. 4-5

THE ROOKIE

TURNAROUND P. 6-18

THE ROOKIE

HELMET P. 19-23

THE ROOKIE

EQUIPMENT P. 24-57

TOOLS OF THE TRADE

WEAPONS P. 58-67

ART

DECALS P. 68-71

IN-GAME CONTENT

SCREENSHOTS..... P. 72

343 INFORMATION

CONTACT US P. 73



ROOKIE

BIO

DBorn on Luna at the very start of the war, the Rookie has never known a life without the threat of the Covenant. Leaving the shelter of the Sol system, he eventually joined the UNSC Marine Corps. Soon after, the Rookie volunteered and was accepted for the Orbital Drop Shock Troopers (ODST), despite his initial lack of combat experience.

After completing ODST training, the Rookie served in a Rapid Offensive Picket within the 26th Marine Expeditionary Force (MEF). After the fall of Reach, the Rookie was assigned to the 65th Shock Troops Division for emergency defensive operations near Earth.

HEIGHT
6 FT 1 IN [186 CM]

SPECIES
HUMAN

WEIGHT
194 LBS [88 KG]

HOMEWORLD
LUNA

BORN
FEBRUARY 9, 2025

SERVICE NUMBER
11282-31220-JD

RANK
LANCE CORPORAL

AFFILIATION
ODST



MATERIAL GUIDE (RECOMMENDED USE)



MAIN ARMOR AND EQUIPMENT
MOLDED PLASTIC, CARBON FIBER



DARK PADDING STRAPS AND DETAILING
FABRIC STRAPS, LEATHER



TECH SUIT
LEATHER, CLOTH



FIELD PACK AND BOOT LEATHER
FOAM, FIBERGLASS, POLYMER



METAL TRIM
FOAM, FIBERGLASS, POLYMER



CAMOUFLAGE
FABRIC, LEATHER, PAINTED PATTERN



FACEPLATE
GLASS, PLASTIC



CHROME BUCKLES, DETAILING
STEEL, POLYMER



INSIGNIA PATCHES
VINYL DECALS



YELLOW DECAL
FABRIC TAPE

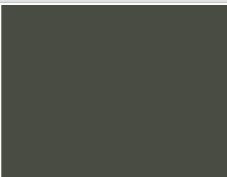


BLUE DECAL
FABRIC TAPE

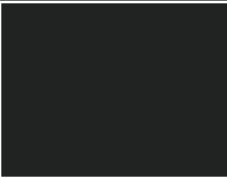


ROOKIE

COLOR GUIDE [RECOMMENDED USE]



MAIN ARMOR COLOR
PANTONE 418C, #494C42



DARK PADDING STRAPS AND DETAILING = "MIDNIGHT"
PANTONE 419C, #212322



BODY SUIT = "BLACK DIVING SUIT; BLACK RUBBER TIRES"
PANTONE BLACK 7C, #3D3935



FIELD PACK AND BOOT LEATHER = "DUSTY BLACK ASPHALT"
PANTONE CG 10C, #63666A



METAL TRIM = "WEATHERED PHOSPHATED METAL"
PANTONE 417C, #81827B



CAMOUFLAGE = "VARIED GRAY AND BLACK"
PANTONE 416,417,418C,
#7E7F74, #81827B, #494C42



TEXT COLOR
PANTONE P 48-8 C, #D62E2F



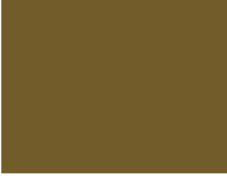
FACEPLATE = "ARCTIC OCEAN"
PANTONE 430C, #7C878E



CHROME BUCKLES, DETAILING = "GRAY STEEL"
PANTONE GRAY 3C, #C8C9C7



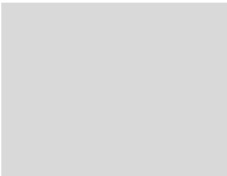
INSIGNIA PATCHES
PANTONE CG 9C, #888888



YELLOW DECAL = "WORN YELLOW TAPE"
PANTONE 147C, #715C2A



BLUE DECAL = "WORN SKYBLUE TAPE"
PANTONE 432C, #333F48



TEXT COLOR
PANTONE CG 1C, #D9D9D6



ROOKIE
TURNAROUND















ROOKIE


COMBAT SUIT [TURNAROUND]

 = Texture not available



 = Texture not available



 = Texture not available




ROOKIE

COMBAT SUIT (FRONT)



ROOKIE

COMBAT SUIT (BACK)

 = Texture not available



ROOKIE

COMBAT SUIT (LEGS)



ROOKIE

COMBAT SUIT (INNER-THIGH)



ROOKIE
HELMET



ROOKIE

HELMET (FRONT)



ROOKIE

HELMET [BACK]



ROOKIE

HELMET (CONT.)

COMBAT HELMET

The Rookie's ODST-issue helmet provides ballistic and energy protection, houses a communications link to the UNSC battle network, and includes a heads-up display.

KEEP IT COOL

The helmet's air conditioning system provides some measure of comfort even if not connected to a full life support system. And the faceplate won't fog up!

SEALED

ODST helmets are sealed at the neck and have excellent air filtration systems. Adapters are provided for connecting to any UNSC life support pack.

WHITE STRIPE

The Rookie's helmet featured a white stripe, a marking he carried from his old unit.

FACEPLATE

The helmet faceplate can be shifted from a polarized (translucent) and unpolarized (transparent) state.

BUILT TO LAST

ODST helmets are built with the most exacting shock-dampening design features available. The trooper's body may suffer in a combat drop, but their heads will remain in one piece.



ROOKIE
HELMET (CONT.)

PANTONE 418C



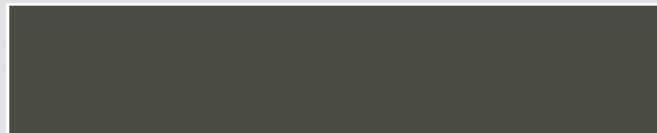
Painted ballistic mesh.

PANTONE 418C



Systems pack for comm gear and environmental controls.

PANTONE 418C



Cheekguards and air intakes.

PANTONE GRAY 3C



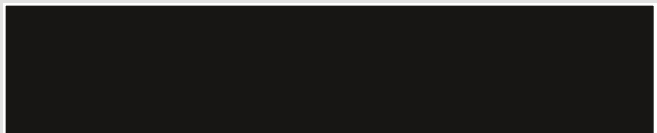
White stripe.

PANTONE 430C



Opaque glass-like faceplate in polarized state.

PANTONE 419C

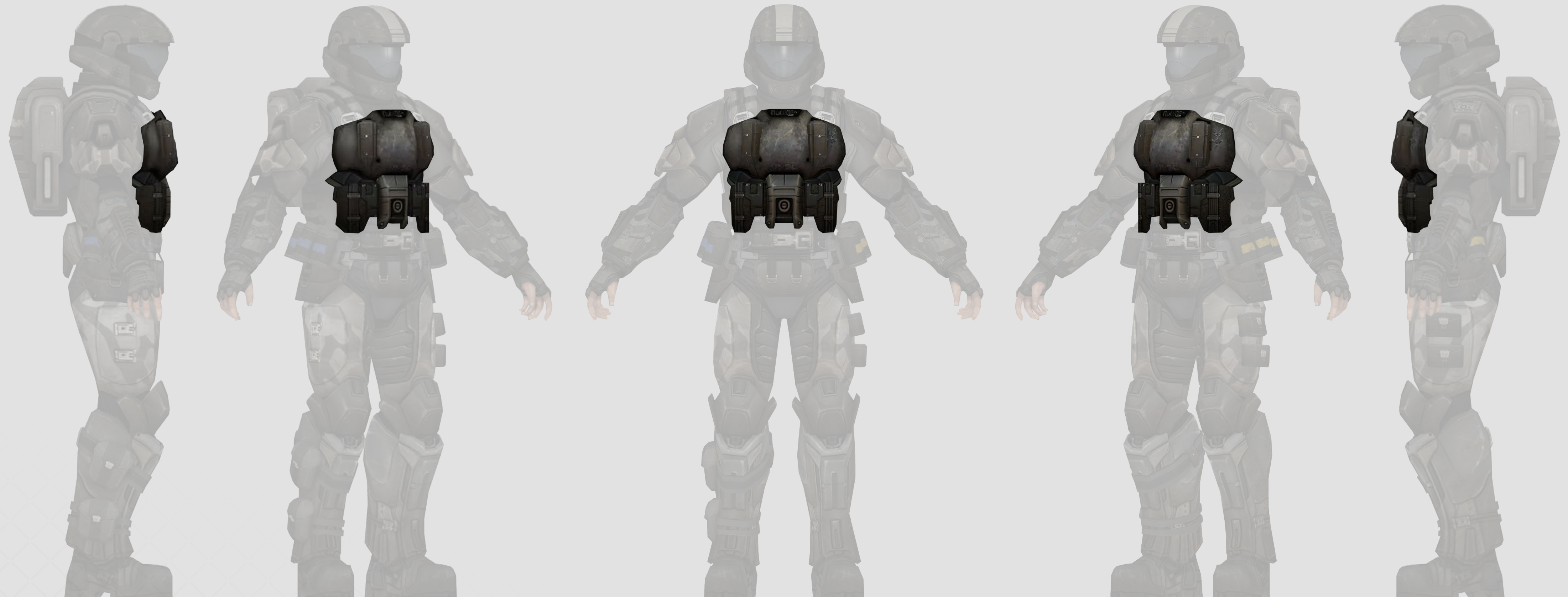


The faceplate "liner" is a darker material than the rest of the helmet.



ROOKIE

PLATE CARRIER



ROOKIE

PLATE CARRIER (CONT.)



ROOKIE

PLATE CARRIER (CONT.)

ARMOR PLATING

The protective armor sections are constructed of metallic laminate plates. The plates are detachable and field-replaceable. The Rookie's breastplate was a late-war style.

EDGE DAMAGE

ODSTs keep their equipment well-maintained, but do not care much for making sure it is ready for parade inspection. Dings, scratches, and even old blast marks are badges of honor for experienced Marines.

CORE PACK

The central system ("belly") pack for the ODST contains a mesh network communications node, wearable computer core, battery pack, and a basic automeDIC. These systems are all wrapped in a ruggedized plastic shell.

CALLSIGN

Marines often use the space at the top of the armor for placing their callsign or nickname. Their rank insignia may also be displayed. This is either a decal or a patch that can be swapped out.

UNSC EMBLEMS

The UNSC wordmark is generally placed somewhere visible on the central breastplate, while the UNSC eagle is on the left breast.

UP-ARMOR PLATES

Mesh and faux leather pouches on either side of the core pack can hold smaller armored plates of varying grades.



ROOKIE

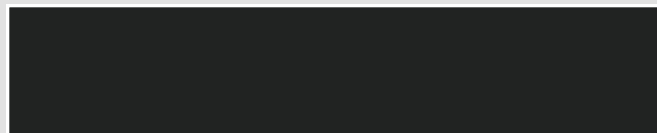
PLATE CARRIER (CONT.)

PANTONE 418C



Metallic base layer with camouflage paint application. Heavy wear with scuffs and burn marks.

PANTONE 419C



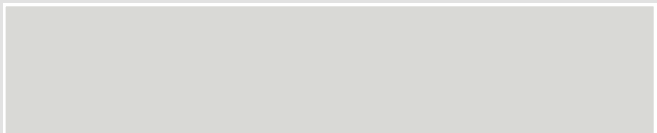
Metal waist clips with plastic coating or anti-corrosion black paint.

PANTONE 417C



Plastic composite housing.

PANTONE CG 1C



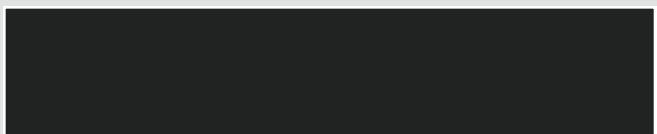
The UNSC eagle is almost universal, but the wordmark and callsign are optional.

PANTONE BLACK 7C



Metallic base layer with camouflage paint application: Has suffered less wear and tear.

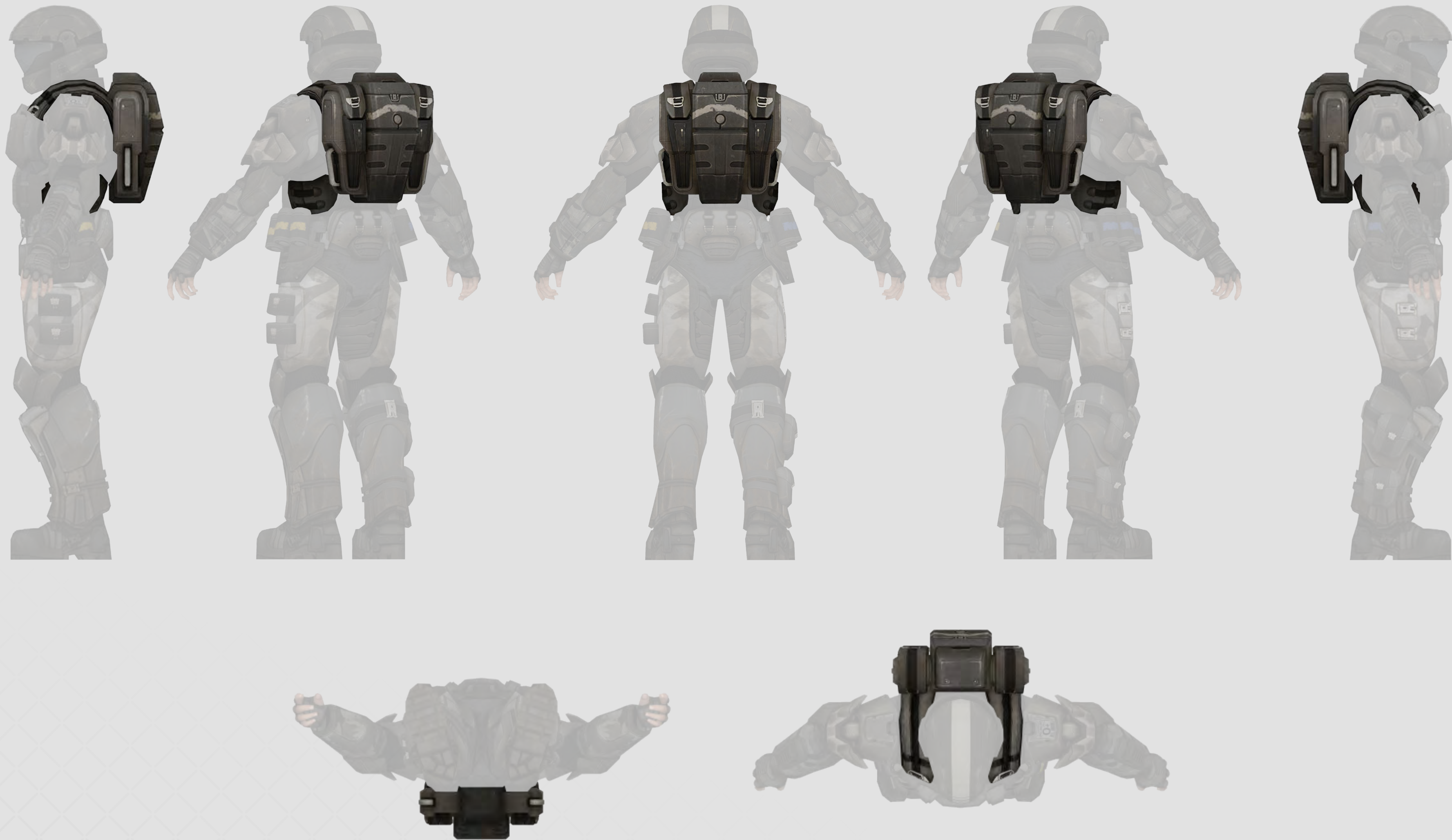
PANTONE 419C



A dark, leather-like flexible material.



ROOKIE
FIELD PACK



ROOKIE

FIELD PACK (CONT.)



ROOKIE

FIELD PACK (CONT.)



ROOKIE

FIELD PACK (CONT.)

HARD CASE

The Rookie's hardcase field pack contains ammunition, medical supplies, and some ration packs.

ARMORED

In addition to holding gear, the pack itself is an additional layer of protection for the Rookie's back.

SECURED

The pack is directly attached to the Rookie's body armor.



ROOKIE

FIELD PACK (CONT.)

PANTONE CG 10C



Straps and buckles. Experienced Marines will tape loose ends to avoid clutter.

PANTONE GRAY 3C



Side container access. The Rookie stored snacks salvaged from otherwise unpalatable meal packs here.

PANTONE BLACK 7C



Waist straps for weight transfer. The Rookie liked a snug fit, to avoid unnecessary noise.



PANTONE 419C



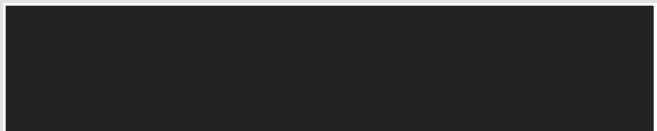
Shoulder connectors for additional stability and weight transfer.

PANTONE GRAY 3C



A light stripe. ODST personnel “acquired” gear from many sources, so unit markings are not consistent between Marines.

PANTONE 419C



Lower pack piece. The Rookie found this location to be useful for storing some small personal items.

ROOKIE

SHOULDERS



ROOKIE

SHOULDERS (CONT.)



ROOKIE

LEFT SHOULDER

UPPER PLATE

The shoulder armor upper plate is made of a metal matrix composite plate screwed into a lighter ballistic fiber inner layer.

HINGE JOINT

The upper and lower plates of the shoulder armor are connected by a hinge to allow for flexibility.

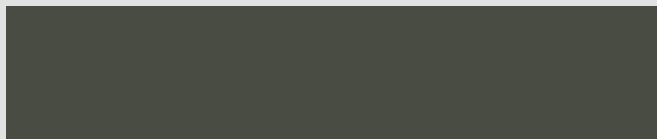
LOWER PLATE

The lower plate can be quickly attached and detached, either to repair battle damage or to free up the Rookie's range of arm motion.



LEFT SHOULDER (CONT.)

PANTONE 418C



The Rookie's shoulder armor is painted in a dark, urban camo scheme.

PANTONE 417C



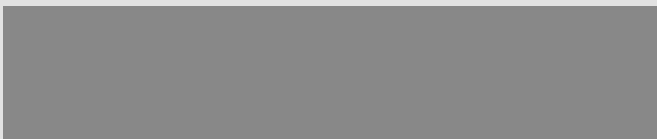
Where the paint has worn away you can see the underlying metal. Same applies to the attachment screws.

PANTONE 417C



The lower armor plate is a different shade.

PANTONE CG 9C



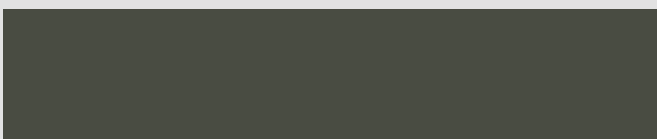
The medical patch is detailed on p. 69

PANTONE 418C



The hinge shares common paint elements from both the top and bottom armor plates.

PANTONE 418C



The lower plate can suffer just as much wear as the other sections of armor.



ROOKIE
FOREARMS



FOREARMS (CONT.)

FOREARM ARMOR

The ODSV vambraces protect the Rookie's most powerful offensive assets: his shooting arms and fists of fury.

PADDING

The armor covers the elbow and lower arms. Though they provided some protection from plasma they were more useful against Insurrection bullets.

GLOVES

The Rookie wore fingerless shooting gloves. His mission was not expected to be in a vacuum or hazardous environment, so full gloves were not needed.



ROOKIE

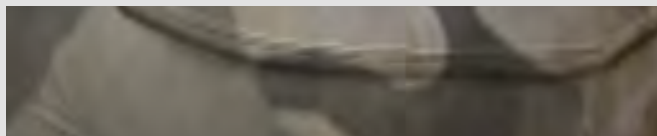
FOREARMS (CONT.)

PANTONE 418C



Elbow guard. Also handy for close combat.

PANTONE 416C, 417C, 418C



Forearm guards.

PANTONE 419C



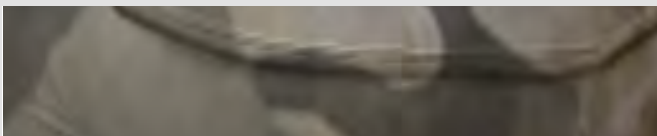
The palm is textured for better grip on the Rookie's weapon.

PANTONE 418C



Vent-like armored structure.

PANTONE 416C, 417C, 418C



Field-replaceable armor section.

PANTONE 419C



Flexible shooting glove. Secondary use for slapping Sangheili was untested.



ROOKIE
BOOTS



BOOTS (CONT.)

KNEES

The combat armor includes kneepads. Very useful on glassed worlds.

GREAVES

ODST greaves provide excellent protection against ballistic attacks, and provide a small measure of defense against plasma.

BOOTS

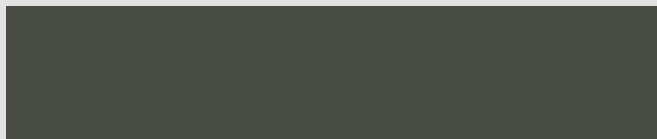
Steel-toe combat boots. Black as the starry night and made for stompin' on the Covenant.



ROOKIE

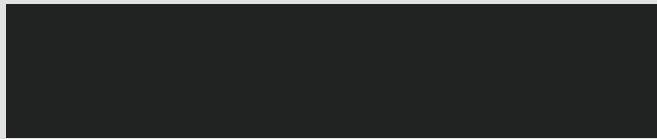
BOOTS [CONT.]

PANTONE 418C



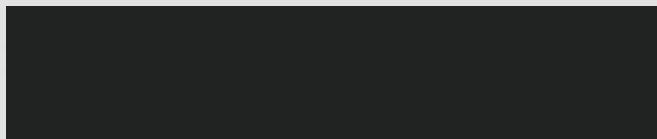
The kneepads are the same material as the breastplate.

PANTONE 419C



See p. 43 for information on the field pouches.

PANTONE 419C



Double elastic straps for holding field pouches.



PANTONE CG 10C



Beneath the kneepad you can see the flexible underlayer.

PANTONE CG 10C



Ash and dirt.

PANTONE BLACK 7C



Worn and grimy from walking through hellish battlefields.

ROOKIE

FIELD POUCHES



FIELD POUCHES (CONT.)

STRAPS

The pouches and their straps are not directly attached to the shin armor, and can be slipped on and off, if needed.

BUCKLES



The game model uses latch-style buckles, but other types can be substituted.



POUCH SIZE

The Rookie used whatever pouches he could salvage or borrow. The leg pouches often got damaged or torn, so needed constant replacement.

UTILITY POUCHES

The Rookie has two pouches on his right lower leg. The contents are not critical to his mission.

ROOKIE

FIELD POUCHES (CONT.)

PANTONE 417C



Metal buckle.

PANTONE 419C



Dark straps: either rubber or cloth.

PANTONE 419C



Wear and grime.

PANTONE 417C



Metal buckle.

PANTONE 419C



The field pouches have a dark stripe.

PANTONE BLACK 7C



All leg pouches share a similar cloth material, in varying shades.



FIELD POUCHES (CONT.)



RIGID FABRIC

The thigh packs are closed with a clasp and are constructed of rigid fabric.

ATTACHMENTS



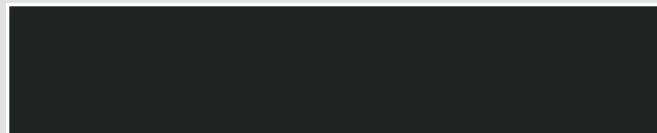
The thigh packs are directly attached to the armor with metal latches.

UTILITY USAGE

The Rookie uses his thigh packs for extra ammunition and small items, such as restraining cables and candy.

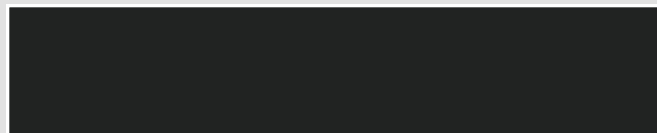
FIELD POUCHES (CONT.)

PANTONE 419C



The containers are a dark color to work with most armor camouflage patterns.

PANTONE 419C



There are no text markings on the field pouches.

PANTONE 417C



Metal clasp. The UNSC love these, as it gives something for the troops to polish.

PANTONE BLACK 7C



The packs contrast slightly with the camouflage pattern of the armor.

PANTONE 417C



The clasp and two metal eyeholes are metal.

PANTONE BLACK 7C



Wear-and-tear may scuff or stain the pouches.



ROOKIE
BELT



[FRONT]



[BACK]



[FRONT]



[BACK]



[FRONT]



[BACK]

ROOKIE

BELT [FRONT]

ADJUSTABLE

The base belt is adjustable for comfort, and features numerous attachment points for various optional gear to be attached, including weapons and additional field pouches.

UTILITY WEAR

The Rookie wore a fairly simple loadout on his belt: six grenades with optional groin, spine, and upper thigh armor.

CASUAL WEAR

The belt can be worn without the ODST armor, but this is usually only the case in emergencies; it can be donned or doffed in moments.



ROOKIE

BELT [BACK]

CUSHION

A small cushion is fitted to the Rookie's rear armor plate with two straps. As the Rookie likes to catch a nap whenever possible, this comes in handy.

REAR PLATE

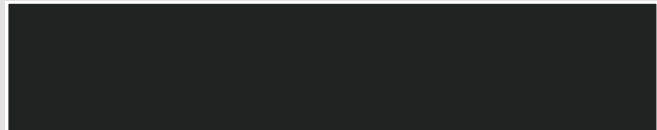
The rear armor plate provides some protection for the Rookie's lower spine. Useful, as the Rookie seemed to have a knack for carrying his team to victory.



ROOKIE

BELT [BACK]

PANTONE 419C



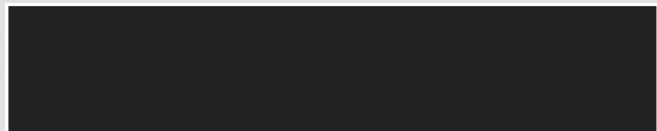
Painted metal with edge wear from extended use.

PANTONE 432C



See p. 54 for more information on the blue-banned canisters (smoke grenades).

PANTONE 419C



Dark fabric straps with woven metal connectors.

PANTONE GRAY 3C



Unpainted metal for the belt latch and adjustable section.

PANTONE 147C

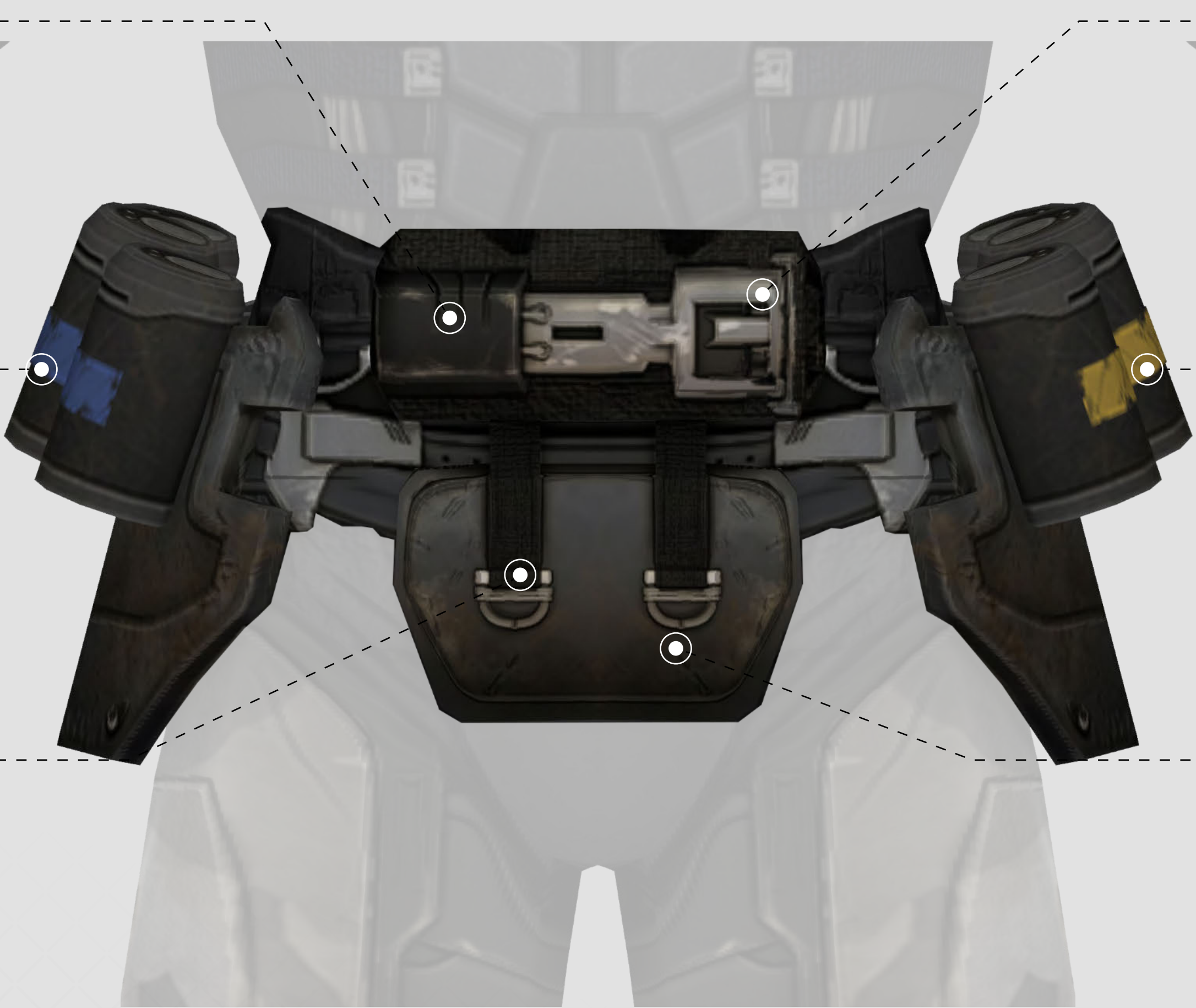


See p. 56 for more information on the yellow-banned canisters (defensive grenades).

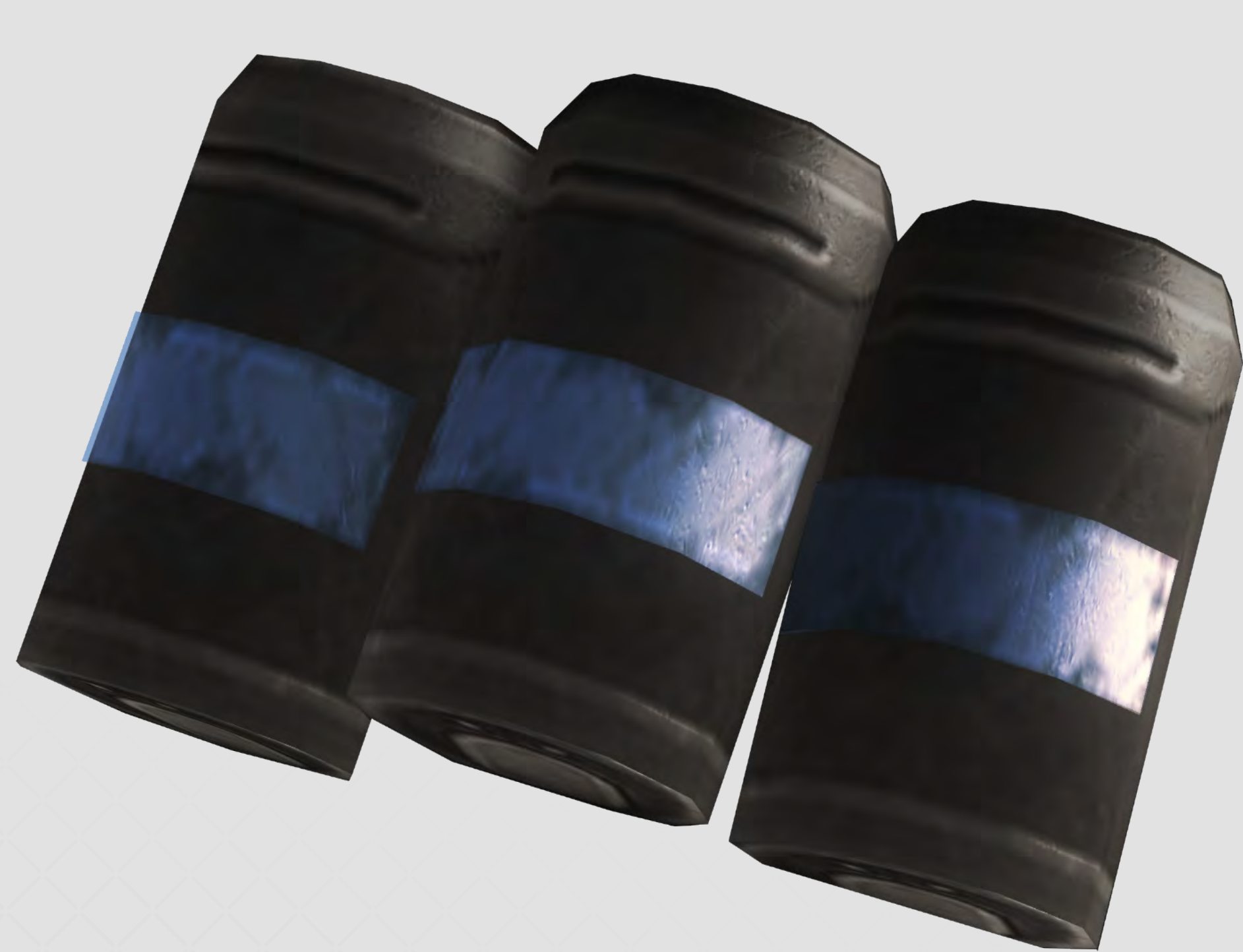
PANTONE 418C



Painted in the same camouflage pattern as the breastplate.



ROOKIE
CANISTERS



ROOKIE

CANISTERS (CONT.)



BLUE CANISTER

CASING

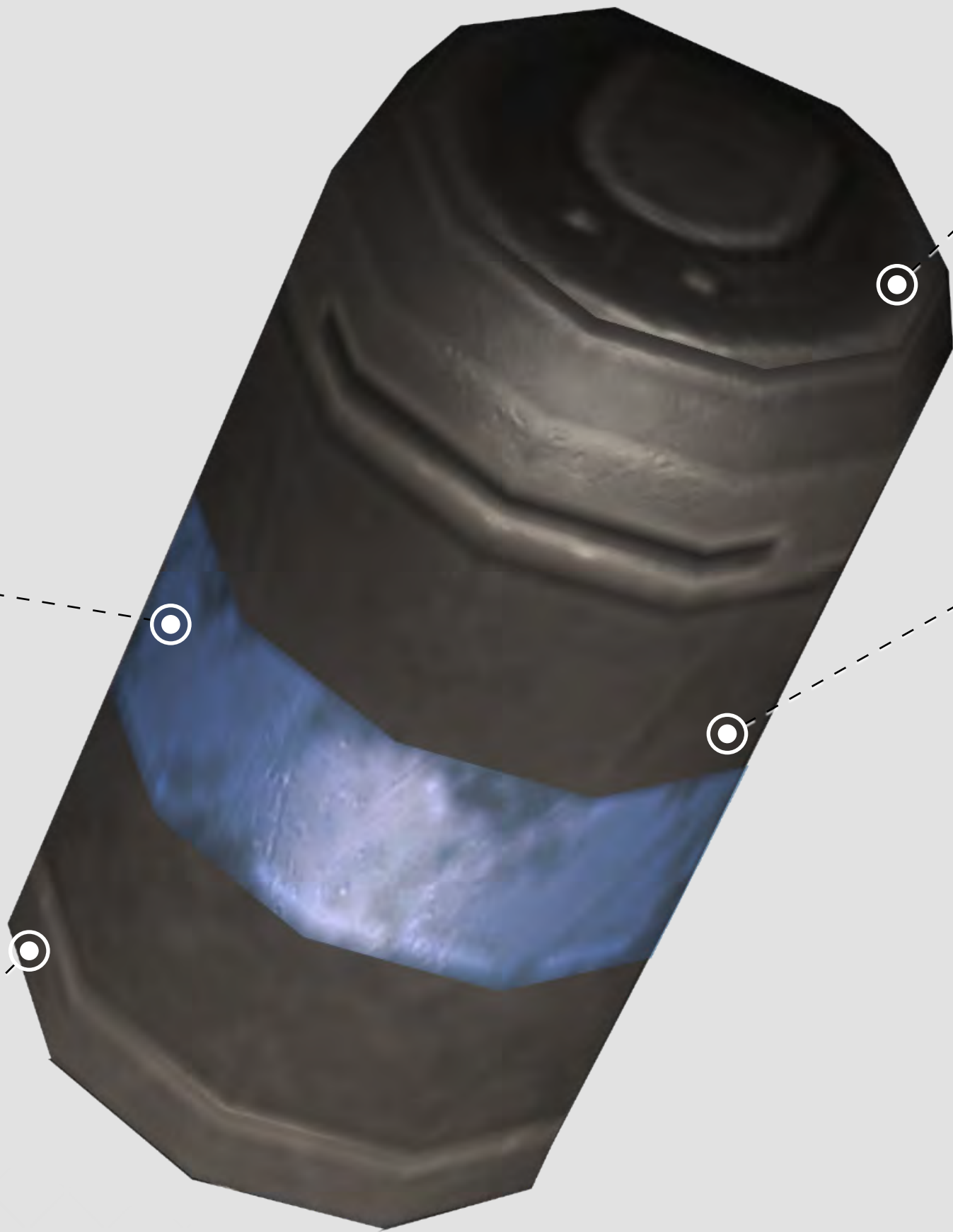
The canister is constructed of thin metal, with three sections: the lid (top), body (middle), and base (bottom).

BLUE BAND

Blue bands indicate training munitions. ODSs make use of training smoke grenades as they are distinctive on the battlefield and relatively safe to use in confined areas (including aboard ship).

BODY

The darker body of the canister is painted to contrast with the classification band. On some canisters the main body is coated with a thin rubberized material for easy grip.



CANISTER LID

The canister "lid" is unpainted metal. This section contains the activator switch and fuze mechanisms. The belt attachment connectors are also a part of this section.

WEAR AND TEAR

Marine equipment is built to handle a lot of abuse. The canister casing often reflects dings and wear from interstellar transport, as well as exposure to harsh environments.

BLUE CANISTER (CONT.)

PANTONE 417C



Unpainted metal.

PANTONE 432C



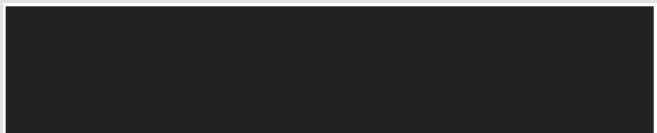
A light blue band. The band color denotes the type of grenade.

PANTONE 417C



Light unpainted metal.

PANTONE 419C



Unpainted metal.

PANTONE 417C



Unpainted metal.

PANTONE 418C



Dark metallic or matte finish to contrast with stripe.



YELLOW CANISTER

CASING

The canister is constructed of thin metal, with three sections: the lid (top), body (middle), and base (bottom). The two grenade types on the Rookie’s ensemble look identical except for their colored band.

BODY

The darker body of the canister is painted to contrast with the classification band. On some canisters the main body is coated with a thin rubberized material for easy grip.

YELLOW BAND

A yellow band indicates the grenade has a high explosive filler. These grenades are designated as defensive grenades, meaning they are intended to be used from prepared positions.

CANISTER LID

The canister “lid” is unpainted metal. This section contains the activator switch and fuze mechanisms. The belt attachment connectors are also a part of this section.

WEAR AND TEAR

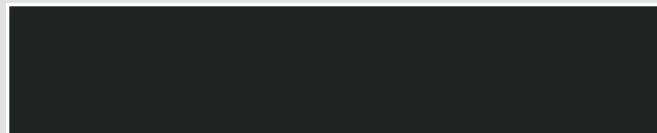
Marine equipment is built to handle a lot of abuse. The canister casing often reflects dings and wear from interstellar transport, as well as exposure to harsh environments.



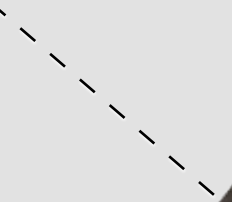
ROOKIE

YELLOW CANISTER (CONT.)

PANTONE 419C



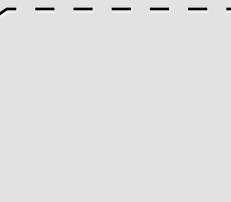
Unpainted metal.



PANTONE 417C



Unpainted metal



PANTONE 417C



Unpainted metal.



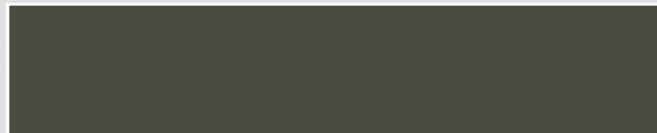
PANTONE 19-8546



The yellow band. The band color denotes the type of grenade.



PANTONE 418C



Light unpainted metal.



PANTONE 417C



Dark metallic or matte finish to contrast with stripe.



ROOKIE

M7S / S M G



ROOKIE

M7S / S M G [CONT.]

The M7S (Suppressed) features a SS/M 49 sound suppressor attachment, along with an under-slung flashlight. This variant is generally seen with an SLS/V 5B smart-link sight, which allows the operator to utilize both a holographic reflex sight or view the weapon aimpoint on their VISR-compatible heads-up display.

TYPE
SUBMACHINE GUN

MANUFACTURER
MISRIAH ARMORY

MODEL
M7S

MAGAZINE
60 ROUNDS

LENGTH (EXTENDED)
35.6 IN (90.5CM)

AMMO
5X23MM CASELESS

IN SERVICE
UNSC (2431-)



ROOKIE

M7S / S M G (CONT.)



ROOKIE

M7S / S M G (CONT.)



ROOKIE

M7S / S M G (CONT.)



TEXT: CAL 5MMX23

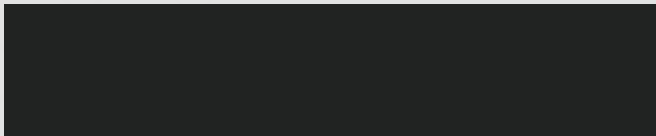


PANTONE CG 10C



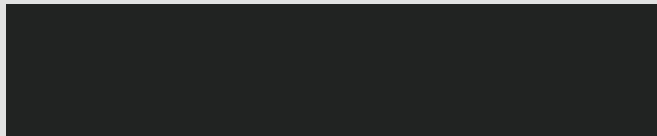
The main structure of the weapon has the appearance of stamped metal.

PANTONE 419C



The grips and buttstock have knobbed, rubbery coatings.

PANTONE 419C



The main body of the suppressor "can" is a black, rubber-like material.

PANTONE P 48-8 C



Active electronics have a glowing red "on" light.

ROOKIE

M6C/SOCOM PISTOL



ROOKIE

M6C/SOCOM PISTOL (CONT.)

The SOCOM version of the M6 comes standard with a custom-designed suppressor, 4x zoom smart-link, and an extended magazine. Beneath the suppressor shroud is a combination laser aiming module and flashflight. The cutlass grip and barrel shape make it difficult to fit in standard holsters, so most users take advantage of mag-clamps on thigh mounts.

TYPE
SEMI-AUTOMATIC SIDEARM

MANUFACTURER	MODEL
MISRIAH ARMORY	M6S

MAGAZINE	LENGTH
12 ROUNDS	17.3 IN [43.9CM]

AMMO	IN SERVICE
12.7X40MM	UNSC [2415-]



ROOKIE

M6C/SOCOM PISTOL (CONT.)



ROOKIE

M6C/SOCOM PISTOL (CONT.)

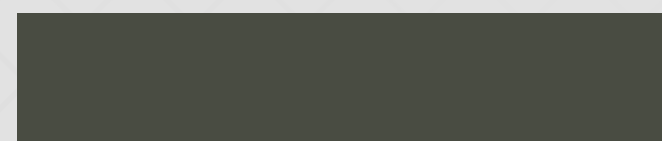


ROOKIE

M6C/SOCOM PISTOL (CONT.)

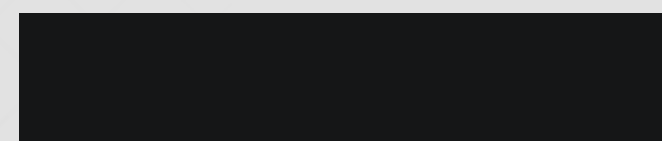


PANTONE 418C



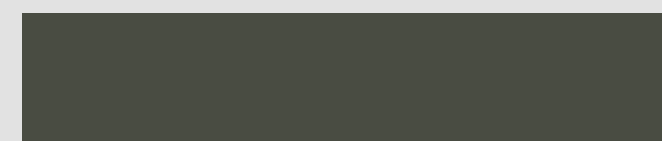
The SOCOM has a metal body and suppressor shroud. Some have a slight satin sheen from anti-corrosion treatments.

PANTONE 419C



The pistol's grip is a rough plastic.

PANTONE 418C

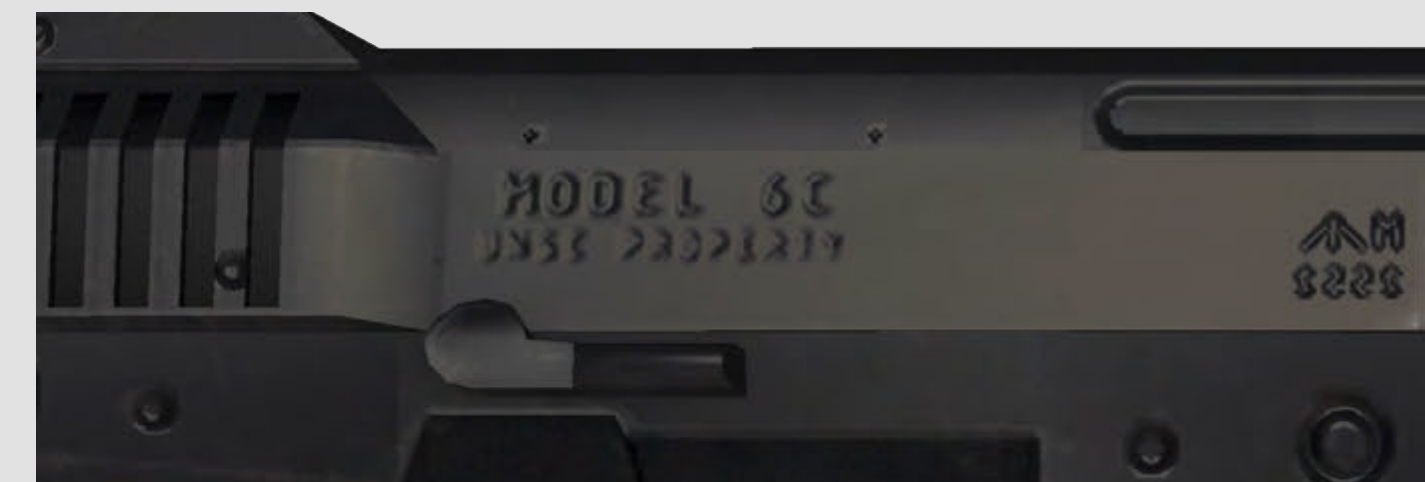


The laser aiming module and flashlight clipped beneath the suppressor are made of hard plastic.

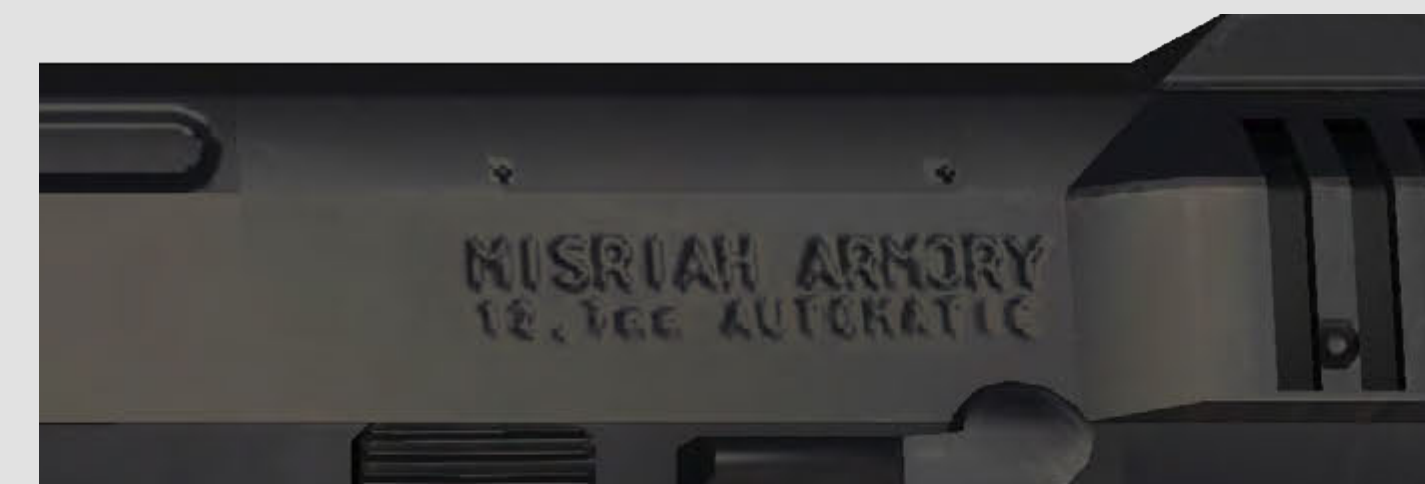
PANTONE P 48-8 C



Power indicators on the attachments have a red glow. This includes the flashlight and laser aiming module.



TEXT: MODEL 6C - UNSC PROPERTY,
MA 2552 (BACKWARDS)



TEXT: MISRIAH ARMORY - 12.7MM AUTOMATIC



TEXT: 문 7 [KOREAN FOR THE NUMBER SEVEN]

ROOKIE

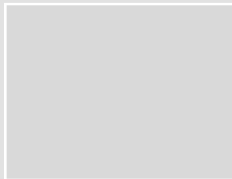
UNSC DECAL [CLASSIC]

The United Nations Space Command (UNSC) “EGB” (short for “Eagle, Globe, and Banner”) logo has been used by the UNSC Marine Corps since its inception. This graphic is used in lieu of Marine-specific insignia for most units during the Covenant War.

The UNSC logo is often stenciled on equipment, and may be simplified in some applications.

TYPE

PRINT/PAINT DECAL



TEXT COLOR
PANTONE COOL GRAY 1 C, #D9D9D6



ROOKIE

BLOOD TYPE DECAL

The Orbital Drop Shock Troopers place themselves behind enemy lines and at the forefront of every major engagement, against overwhelming alien opposition. Grievous injuries are to be expected, so ODST's place their blood type and medical reference barcode link on their left shoulders, for quick reference by medics. In this case, the Rookie's is blood type O+, which is the most common. "None" indicates no significant allergies to common medication or battle treatments.

TYPE

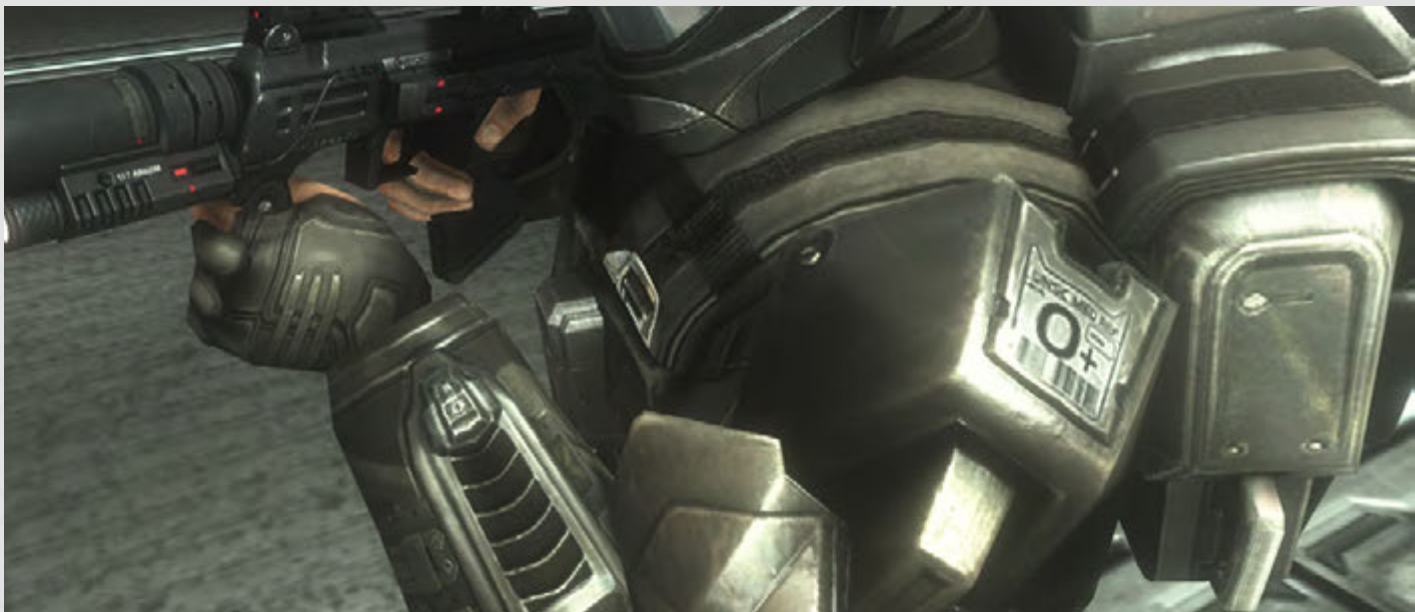
PRINT/PAINT DECAL

FONT USED

HANDEL GOTHIC D



BLOOD TYPE PATCH INNER COLOR
PANTONE COOL GREY 9C, #98A4AE



ROOKIE

UNSC WORDMARK

[CLASSIC]

Simple and effective, the UNSC wordmark adorns almost every Marine. The service branch has its own logo, but the Marines (and thus the ODSTs) pride themselves on being the senior ground force.

TYPE

PRINT/PAINT DECAL

FONT USED

HANDEL GOTHIC D

TEXT COLOR

PANTONE COOL GRAY 1 C, #D9D9D6



UNSC

ROOKIE

NAMEPLATE

After a “friendly” suggestion by his squadmates, the new guy on Alpha-Nine adopted the callsign “Rookie.” Either in haste or because it was recycled, the Rookie’s nameplate had Private, First Class (PFC) rank insignia instead of Lance Corporal (LCpl). Below this was a barcode used by the ODSTs for quick asset/personnel checks.

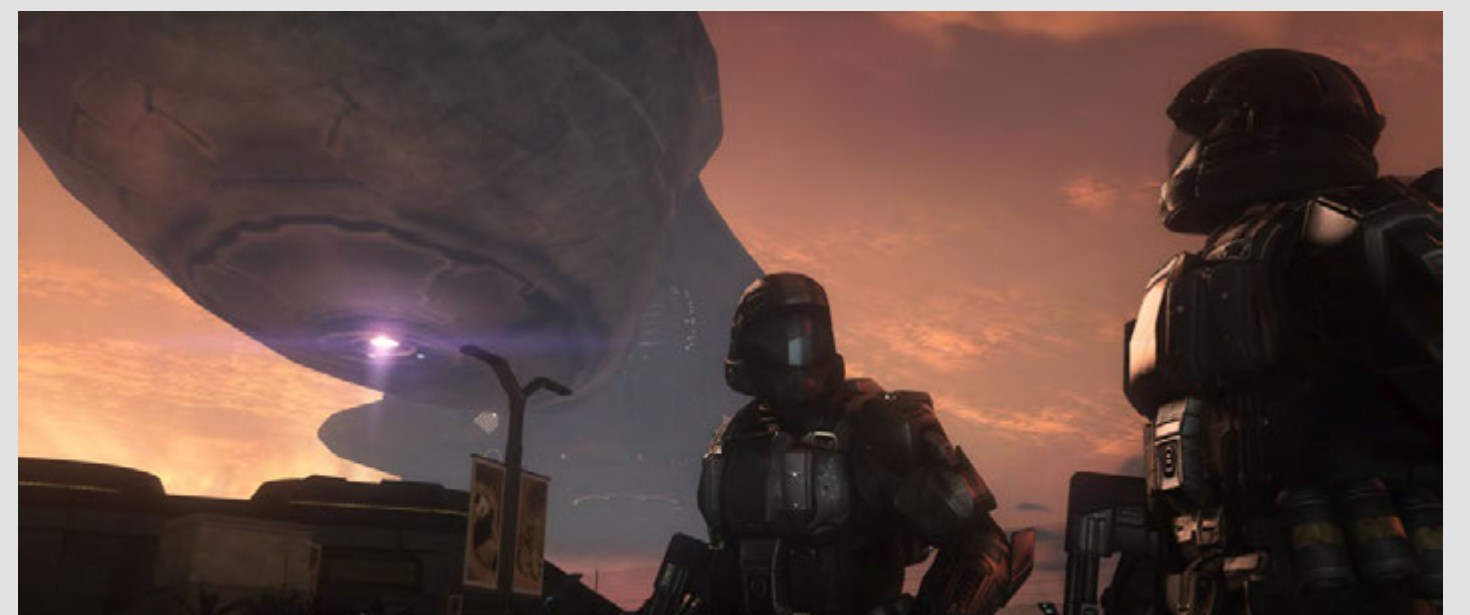
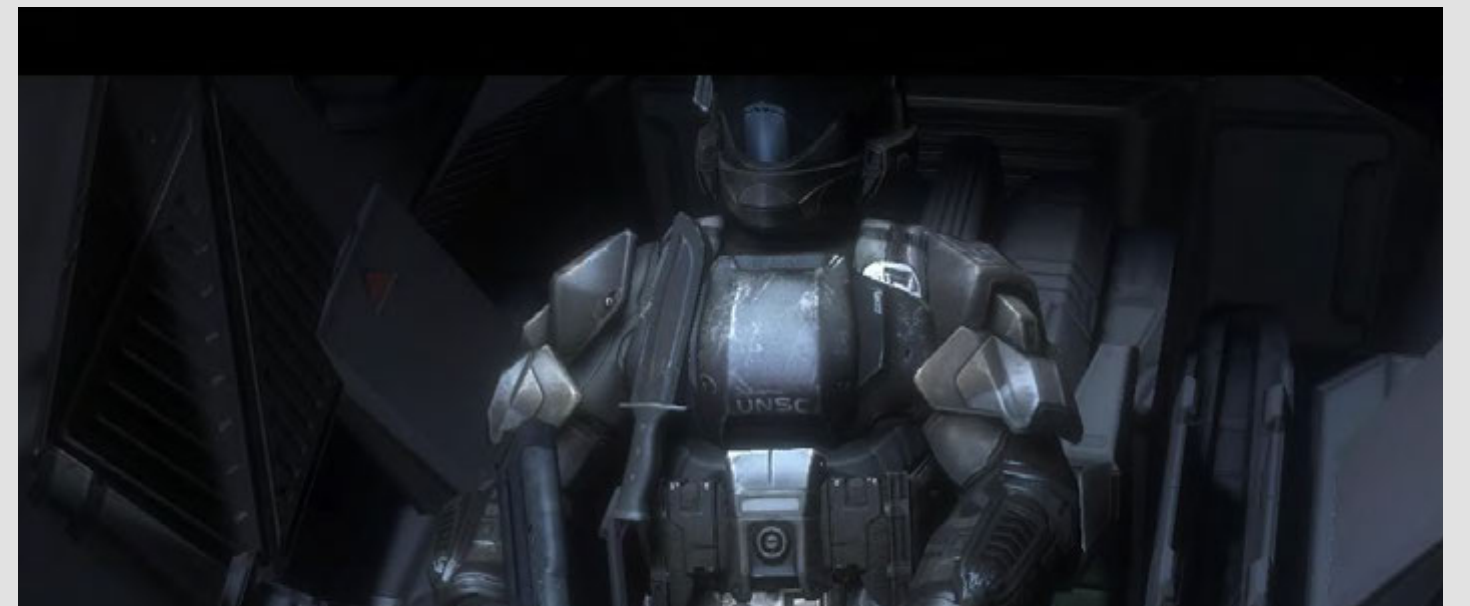
TYPE
PRINT/PAINT DECAL

FONT USED
HANDEL GOTHIC D

TEXT COLOR
PANTONE COOL GRAY 1 C, #D9D9D6



ROOKIE^



ROOKIE

SHARE YOUR WORK

At 343 Industries we are passionate about the Halo universe and know you are too. We are always inspired by and proud of the Halo community.

Please share your cosplay work with us on social media!



TWITTER

@HALO



FACEBOOK

FACEBOOK.COM/HALO



INSTAGRAM

@HALO



SHOW US YOUR AMAZING WORK AT

#HALOSPOTLIGHT

The purpose of this guide is to inform cosplay fans, and not intended for use of recreating content with the intent to sell.